

RAINBERRY WEST OF BOCA PLAT NO. 1

A PORTION OF WHICH IS A
PART OF RAINBERRY OF WEST BOCA P.U.D.
SITUATE IN SECTION 19, TOWNSHIP 47 SOUTH, RANGE 42 EAST, PALM BEACH
COUNTY, FLORIDA, BEING A REPLAT OF A PORTION OF BLOCK 78, OF
THE PALM BEACH FARMS COMPANY'S PLAT NO.3 (P.B.2, PG.45-54).
SHEET 2 OF 3
NOVEMBER, 1988

SURVEYOR'S NOTES:

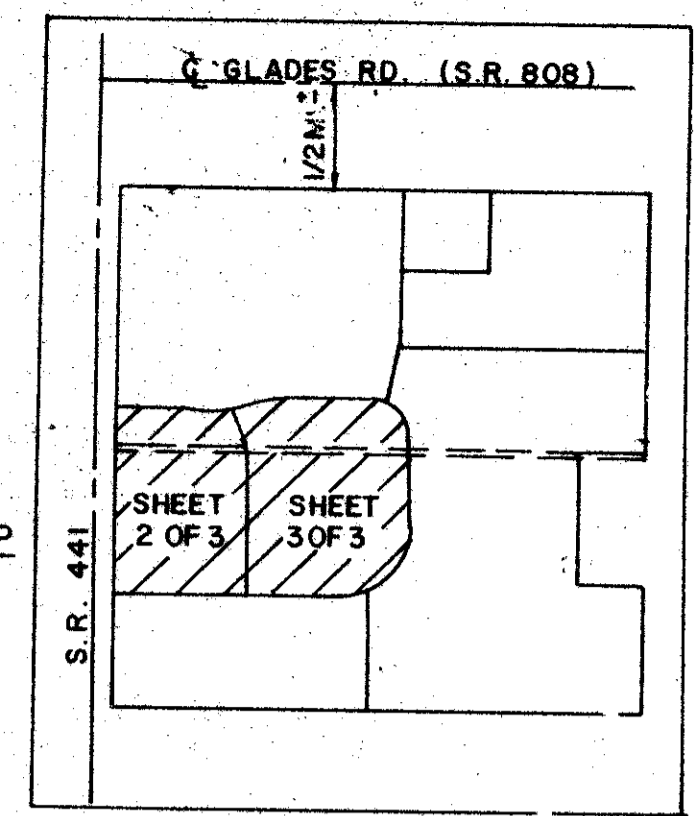
- ALL BEARINGS SHOWN HEREON REFER TO AN ASSUMED BEARING OF N00°53'32"W ALONG THE WEST LINE OF BLOCK 78 OF THE PALM BEACH FARMS COMPANY'S PLAT NO. 3.
U.E. DENOTES UTILITY EASEMENT.
D.E. DENOTES DRAINAGE EASEMENT.
L.A.E. DENOTES LIMITED ACCESS EASEMENT.
P.R.M. DENOTES PERMANENT REFERENCE MONUMENT—
P.C.P. DENOTES PERMANENT CONTROL POINT AND THEY ARE SHOWN THUS:
- THERE SHALL BE NO BUILDINGS OR ANY KIND OF CONSTRUCTION PLACED ON UTILITY OR DRAINAGE EASEMENTS. CONSTRUCTION UPON MAINTENANCE OR MAINTENANCE ACCESS EASEMENTS MUST BE IN CONFORMANCE WITH ORDINANCE 86-21 AND ALL OTHER BUILDING AND ZONING CODES AND/OR ORDINANCES OF PALM BEACH COUNTY.
THERE SHALL BE NO TREES OR SHRUBS PLACED ON UTILITY EASEMENTS WHICH ARE PROVIDED FOR WATER AND SEWER USE OR UPON DRAINAGE, MAINTENANCE OR MAINTENANCE ACCESS EASEMENTS.
LANDSCAPING ON OTHER UTILITY EASEMENTS SHALL BE ALLOWED ONLY AFTER CONSENT OF ALL UTILITY COMPANIES OCCUPYING SAME.
- IN THOSE CASES WHERE EASEMENTS OF DIFFERENT TYPES CROSS, DRAINAGE EASEMENTS SHALL HAVE FIRST PRIORITY, UTILITY EASEMENTS SHALL HAVE SECOND PRIORITY, ACCESS EASEMENTS SHALL HAVE THIRD PRIORITY, AND ALL OTHER EASEMENTS SHALL BE SUBORDINATE TO THESE WITH THEIR PRIORITIES BEING DETERMINED BY THE USE RIGHTS GRANTED.
- NOTICE: THERE MAY BE ADDITIONAL RESTRICTIONS THAT ARE NOT RECORDED ON THIS PLAT THAT MAY BE FOUND IN THE PUBLIC RECORDS OF THIS COUNTY.

STATE OF FLORIDA
COUNTY OF PALM BEACH

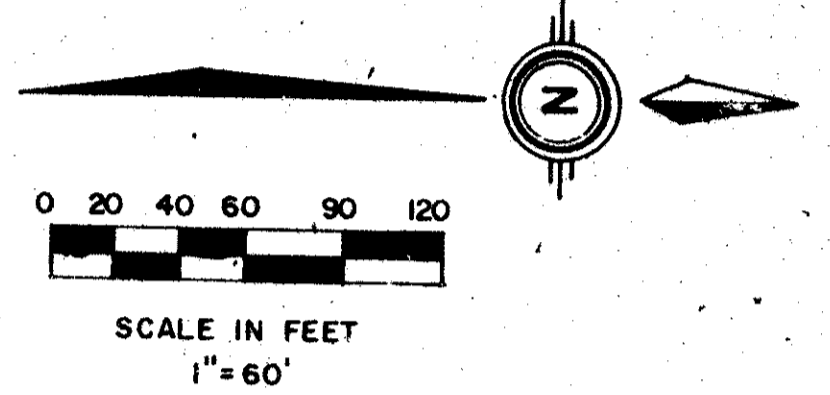
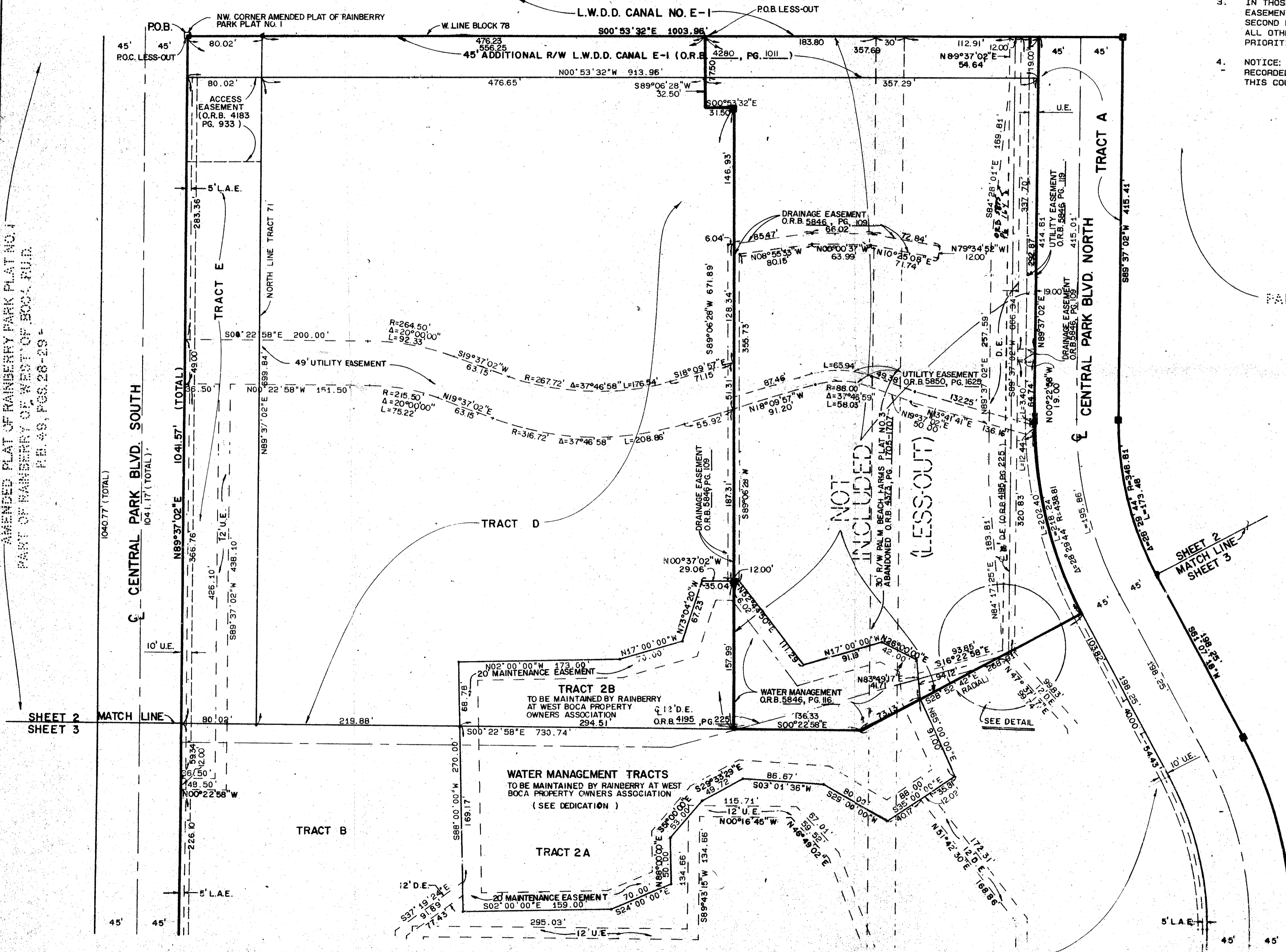
THIS PLAT WAS FILED FOR RECORD AT _____ DAY OF _____ AD, 1988 AND DULY RECORDED IN PLAT BOOK _____ ON PAGES _____ AND _____

JOHN B. DUNKLE, CLERK
BY: _____, D.C.

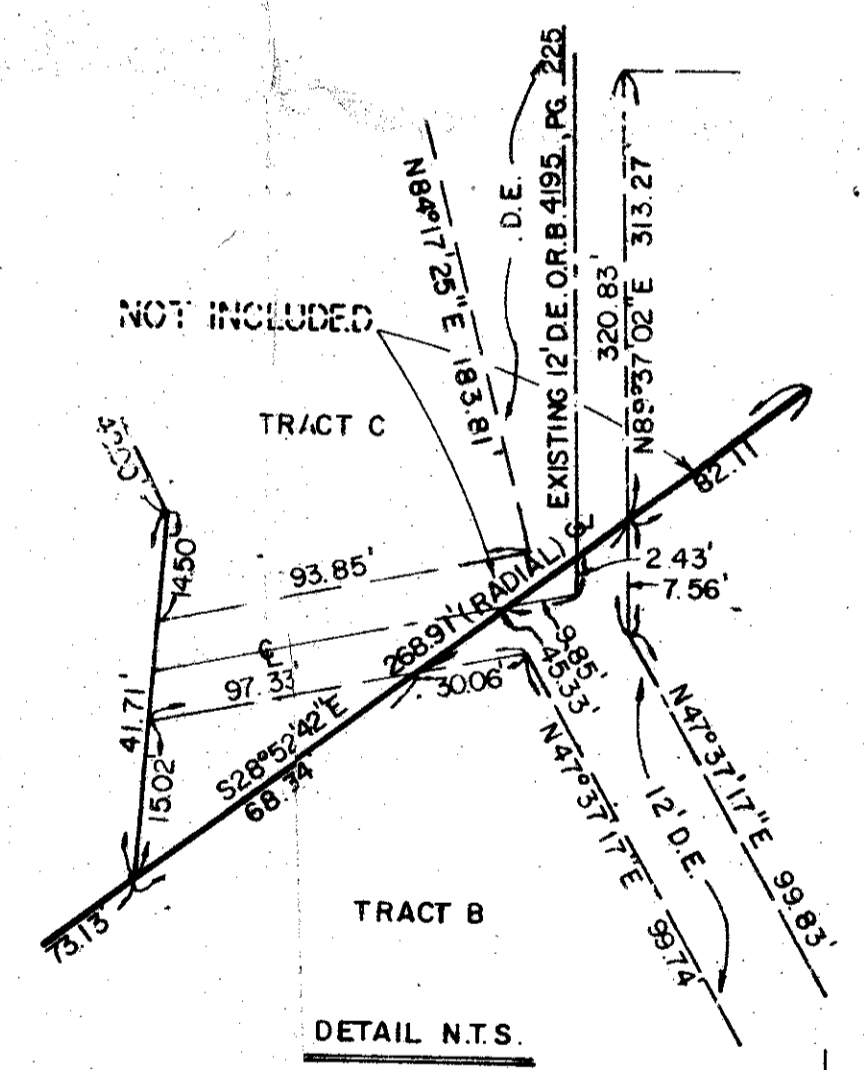
LOCATION MAP N.T.S.



SUBDIVISION: Rainberry West of Boca
BOOK: 61 PAGE: 138
PLAT NO: 138
DATE: 11/13/88
AR: 83-56
CITY: BOCA RATON
COUNTY: PALM BEACH



BLOCK 78
PALM BEACH FARMS COMPANY'S PLAT NO. 3
P.B. 2, PGS. 45-54



0372-004

6/1/38

Meridian Surveying and Mapping Inc. WEST PALM BEACH, FLORIDA

DRAWN	M.E.H.	DATE	MARCH, 1984
CHECKED		SCALE	1" = 60'
DRAWING NO.	83-P-136		

RAINBERRY WEST OF BOCA PLAT NO. 1

TAZ 783

AMENDED PLAT OF RAINBERRY PARK PLAT NO. 1
PART OF RAINBERRY OF WEST OF BOCA P.U.D.
P.B. 49, PGS. 28-29

104077 (TOTAL)

104117 (TOTAL)

SHEET 2 MATCH LINE SHEET 3

SHEET 2 MATCH LINE SHEET 3

TRACT 42

TRACT 42

INV